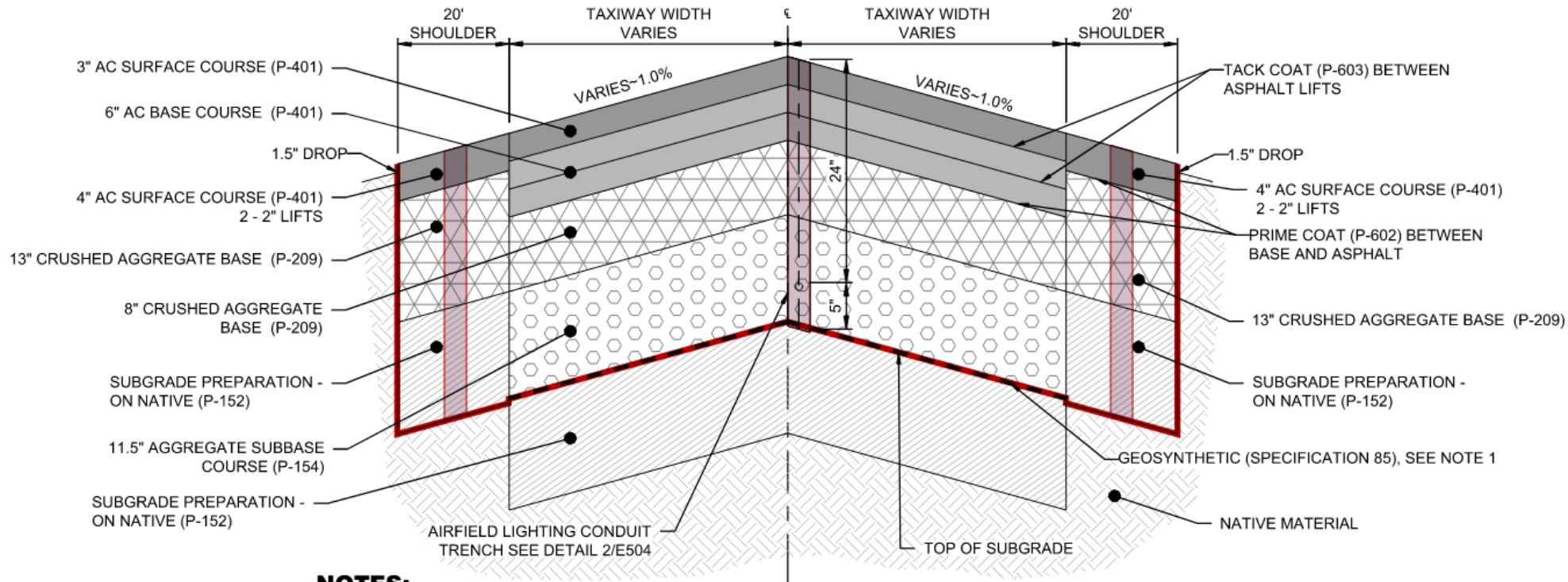


*Van Nuys Airport
Taxiways Reconstruction Yr. 1
(D, E, F, Q)*

*Presentation to:
Van Nuys Airport Chief Pilots*

February 13, 2025 (revised 3/25/2025)

Project Overview – Pavement Reconstruction Section



NOTES:

1. CONTRACTOR SHALL PLACE A LAYER OF NONWOVEN GEOTEXTILE, THEN PLACE A LAYER OF GEOGRID. A LAYER OF WOVEN GEOTEXTILE CAN BE USED IN LIEU OF COMBINATION LAYERS OF NONWOVEN GEOTEXTILE AND GEOGRID.

1
C251

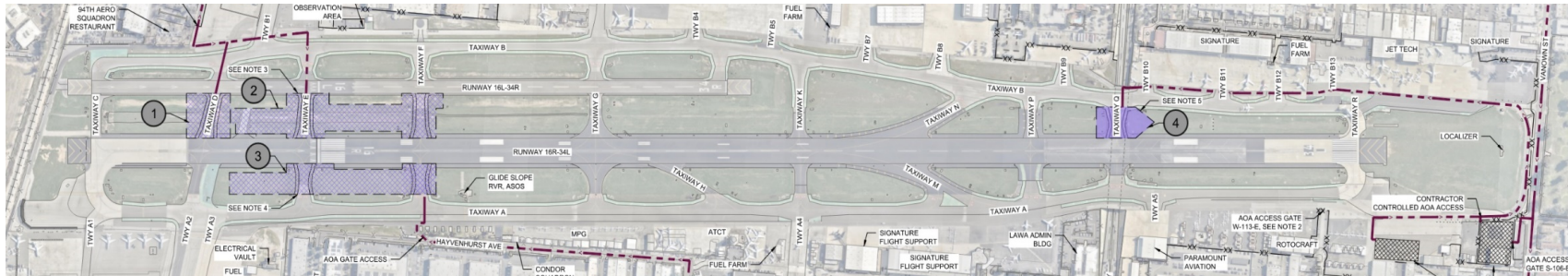
ADG III PAVEMENT SECTION ON NATIVE (TWY F (WEST))

SCALENTS

Construction Schedule and Primary Impacts

Tasks / Operational Impacts	Date(s)	Duration
Mobilization NTP	November 4, 2024	~3 months
Construction		
Runway 16L-34R closed	February 11 to May 20	~3 months
Runway 16R-34L Shortened at TXY E <ul style="list-style-type: none"> • ILS offline • Reduced declared distances 	February 11 to April 17	~2 months
Runway 16R-34L Shortened at TXY F <ul style="list-style-type: none"> • ILS offline • PAPI replaced by temporary PLASI • Reduced declared distances • 16R threshold displaced 	April 17 to June 26	~2.5 months
Runway 16R-34L nightly closure with daily reopening	June 26 to July 31	~1 month

Phasing (Total Duration = 313 Calendar Days / 165 days = Field Construction)

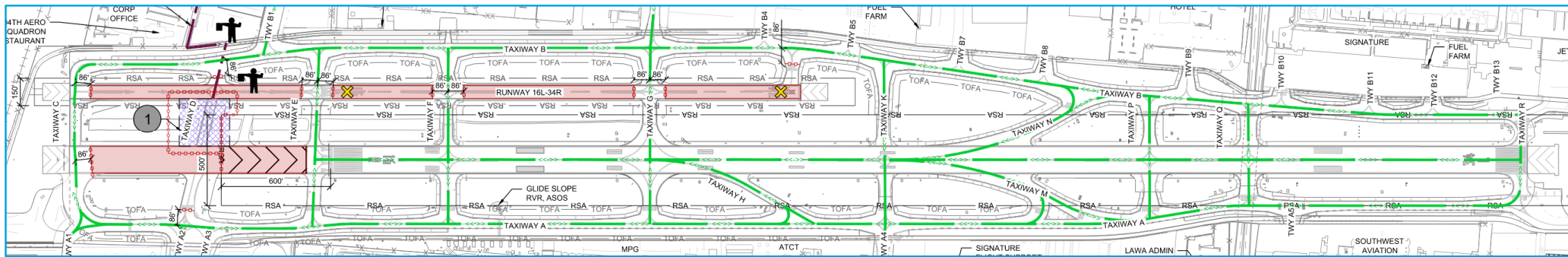


PHASING LOGIC DIAGRAM

TASK NAME	DURATION (CALENDAR) <small>(REFER TO PR-2 FOR SUBTRACTION OF DAYS RELATED TO AWARD OF ADD ALTS)</small>	PREDECESSOR WORK	2024											
			NOV	DEC	JAN	FEB	MAR	APR	MAY	JUN	JUL	AUG	SEP	
VNY TAXIWAYS RECONSTRUCTION (TAXIWAYS D, E, F, Q)	313 DAYS		[Timeline grid with phases 0-4 and X plotted]											
PHASE 0	90 DAYS	CONTRACT NOTICE TO PROCEED	[Daytime Work]											
PHASE 1A	4 NIGHTS	MOBILIZATION	[Nighttime Work]											
PHASE 1	52 DAYS	PHASE 1A	[Daytime Work]											
PHASE 2A	4 NIGHTS	PHASE 1	[Nighttime Work]											
PHASE 2	31 DAYS*	PHASE 2A	[Daytime Work]											
PHASE 3A	2 NIGHTS	PHASE 2	[Nighttime Work]											
PHASE 3	33 DAYS*	PHASE 3A	[Daytime Work]											
PHASE 3B	4 NIGHTS	PHASE 3 (SEE NOTE 5)	[Nighttime Work]											
PHASE 4A	7 NIGHTS*	PHASE 3B (SEE NOTE 5)	[Nighttime Work]											
PHASE 4	28 NIGHTS*	PHASE 4A (SEE NOTE 5)	[Nighttime Work]											
PHASE X	58 DAYS	PHASE 4 (SEE NOTE 5)	[Daytime Work]											

Nighttime Work
 Daytime Work

Phase 1 – Taxiway D Reconstruction (Including Pavement Test Sections) 61 Calendar Days, February 11 to April 12



Runway 16R-34L Declared Distances

	RWY 16R		RWY 34L	
	Existing	Proposed	Existing	Proposed
TODA				
TORA	8,001'	6,701'	8,001'	6,327'
ASDA				
LDA	6,570'	6,568'	7,261'	6,168'

Construction Phase Notes

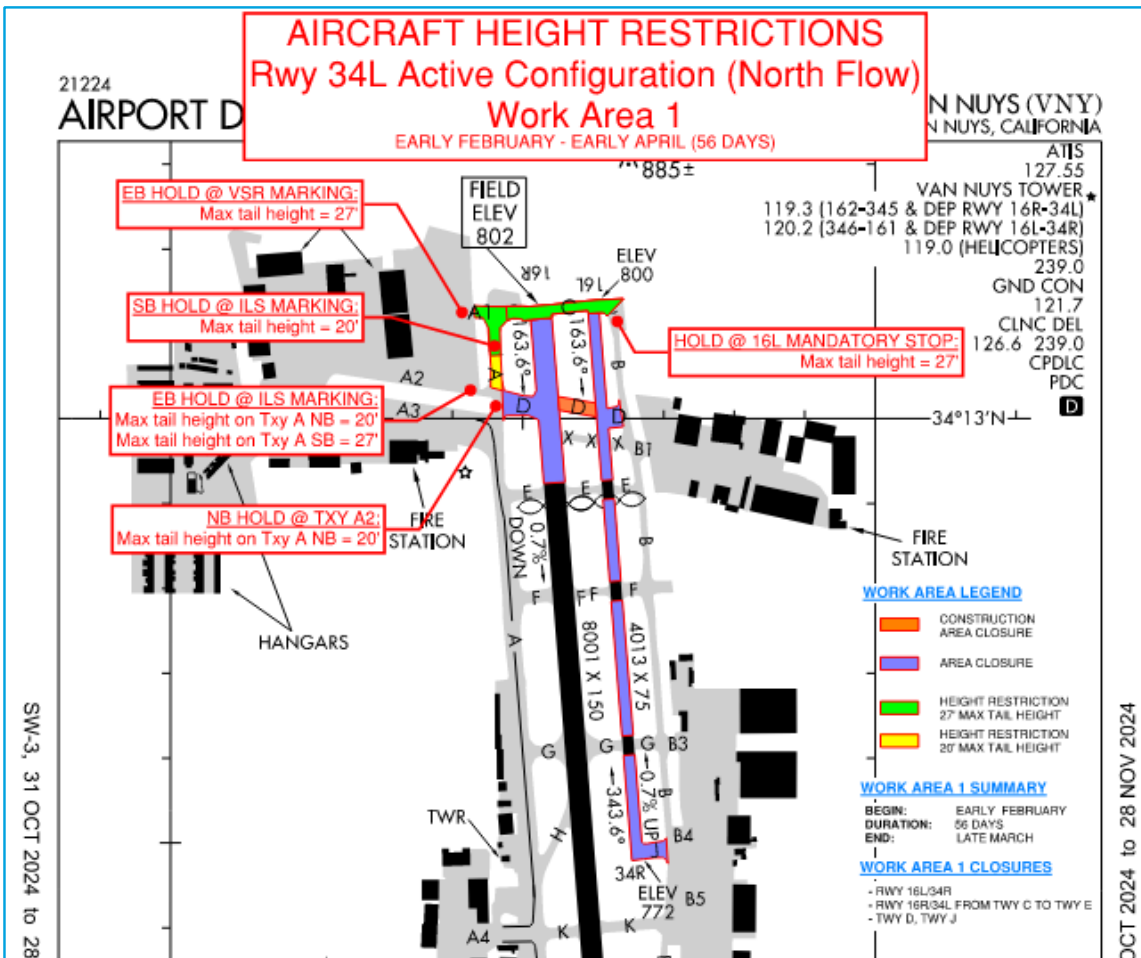
Construction

1. Work Hours: Daytime, Minimum 10-hr shifts.
2. Work Days: Monday thru Saturday
3. Duration: 61 calendar days.
4. Other Criteria: Test section completed within 25 calendar days

Airfield Operations

1. Runway 16L-34R – Closed
2. Runway 16R-34L – Shortened, 16R ILS Not Available
3. Taxiway D – Closed
4. Taxiway C and Taxiway A north of Taxiway A2
 1. Height restrictions 0600 to 2245
 2. Closed 2245 to 0600

Phase 1 – Taxiway D Reconstruction (Including Pavement Test Sections) 61 Calendar Days, February 11 to April 12



North Flow, 34L Active Aircraft Height Restrictions

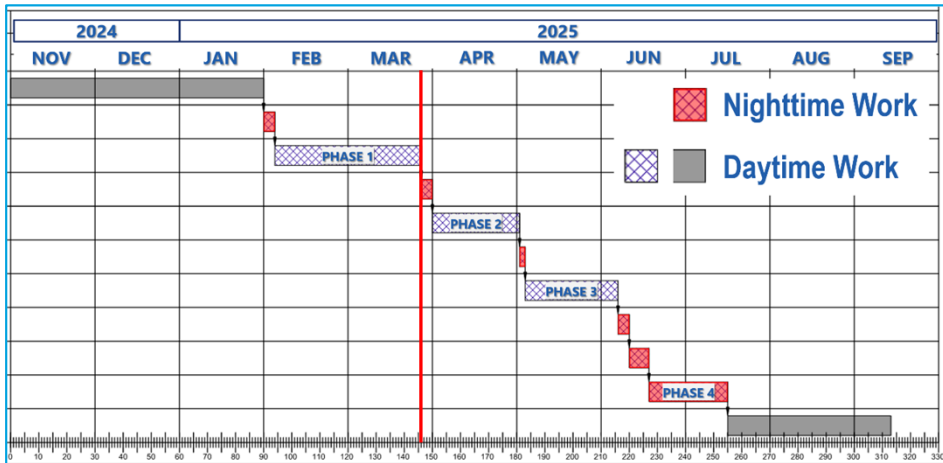
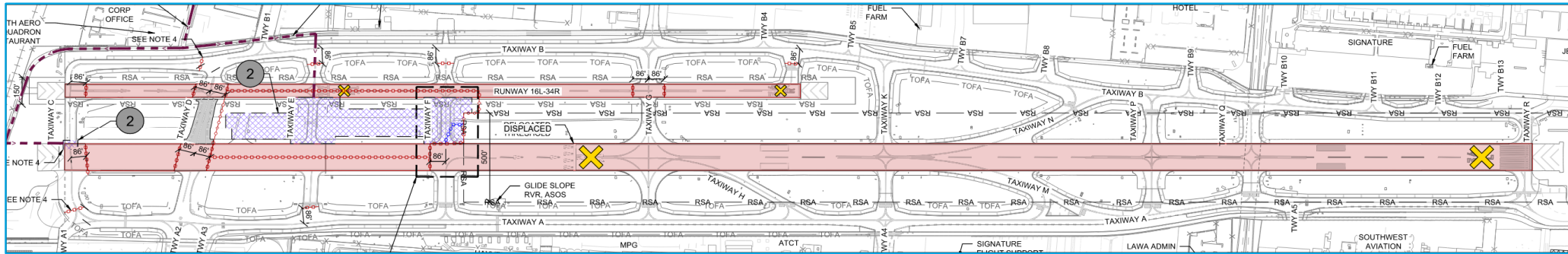
Hold Positions for Aircraft Height Restrictions:

- 27' Max Tail Height:
 - Runway 16L mandatory stop bar for NB aircraft on TWY B
 - Perimeter VSR marking for EB aircraft on TWY A1
 - ILS hold marking for SB aircraft on TWY A2 at TWY A
- 20' Maximum Tail Height:
 - ILS hold marking for SB aircraft on TWY A between TWY A1 and A2
 - ILS hold marking for NB aircraft on TWY A2 at TWY A
 - TWY A2 intersection for NB aircraft on TWY A

27' max tail height for aircraft at (3) apron parking positions directly west of VSR and south of TWY A1

Height restricted areas are closed when ATCT is closed from 2245 to 0600

Phase 2A – Phase 2 Pre-Work – Runway 16R Threshold Displacement 4 Calendar Nights, April 13 to April 17



Construction Phase Notes

Construction

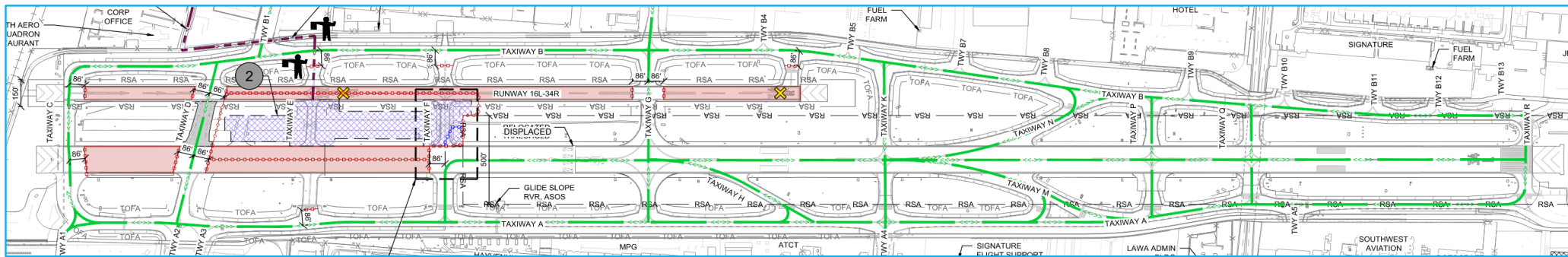
1. Work Hours: Nighttime 2230 to 0600.
2. Work Days: Sunday to Thursday.
3. Duration: 4 consecutive calendar nights.
4. Other Criteria:
 - a. Runway 16R-34L shall reopen by 0600 at the end of each of the first three nights.
 - b. Runway 16R threshold displacement shall take effect over the final night of the phase.

Airfield Operations

1. Runway 16L-34R and 16R-34L – Closed
2. Various Taxiways on north end – Closed

Phase 2 – Taxiway E (east) and F (east) Reconstruction

31 Calendar Days, April 17 to May 18



Runway 16R-34L Declared Distances

	RWY 16R		RWY 34L	
	Existing	Proposed	Existing	Proposed
TODA			8,001'	5,000'
TORA	8,001'	5,824'	8,001'	5,000'
ASDA			7,261'	4,824'
LDA	6,570'	5,224'		

Construction Phase Notes

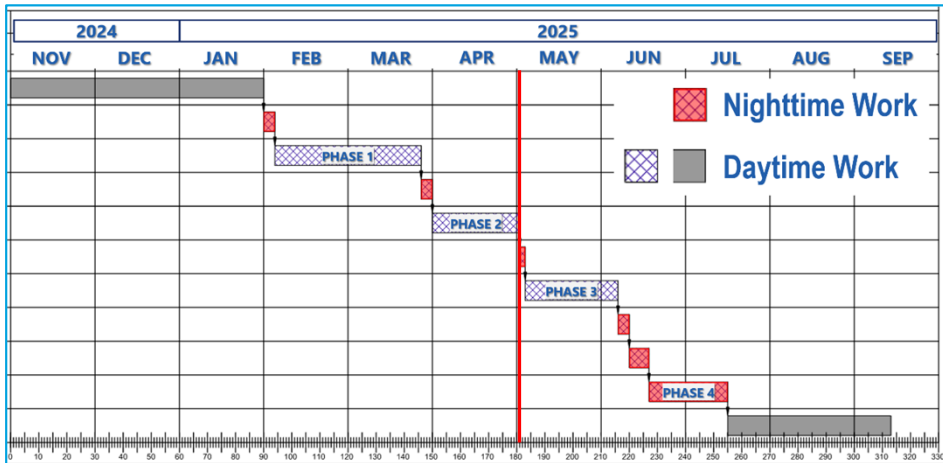
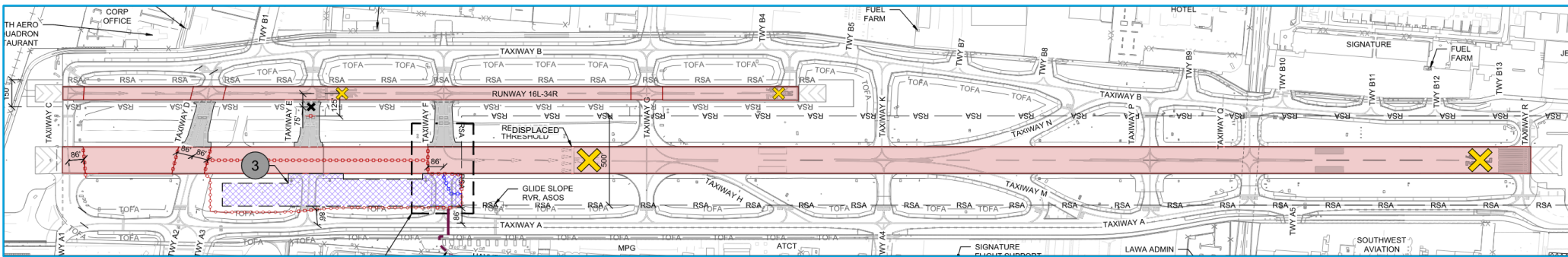
Construction

1. Work Hours: Daytime, Minimum 10-hr shifts.
2. Work Days: Monday thru Saturday.
3. Duration: 31 Calendar Days

Airfield Operations

1. Runway 16L-34R – Closed
2. Runway 16R-34L – Threshold Displaced, Shortened
 - a. 16R ILS Not Available
 - b. 16R PAPI Not Available, Temporary PLASI Available

Phase 3A – Phase 3 Pre-Work 2 Calendar Nights, May 18 to May 20



Construction Phase Notes

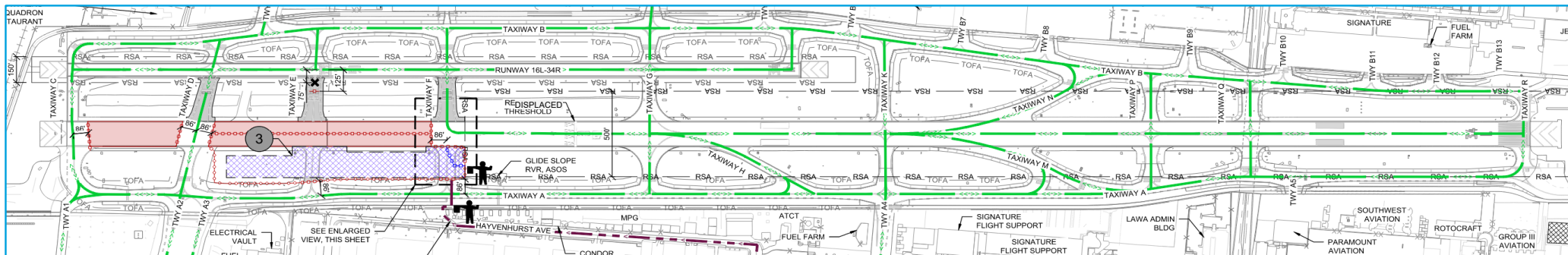
Construction

1. Work Hours: Nighttime 2230 to 0600.
2. Work Days: Sunday to Tuesday.
3. Duration: 2 consecutive calendar nights.
4. Other Criteria:
 - a. Runway 16R-34L shall reopen by 0600 at the end of the first night.
 - b. Runway 16L-34R opening and taxiway closures / openings shall take effect over the final night of the phase.

Airfield Operations

1. Runway 16L-34R and 16R-34L – Closed
2. Various Taxiways on north end – Closed

Phase 3 – Taxiway E (west) and F (west) Reconstruction 33 Calendar Days, May 20 to June 21



Runway 16R-34L Declared Distances

	RWY 16R		RWY 34L	
	Existing	Proposed	Existing	Proposed
TODA				
TORA	8,001'	5,824'	8,001'	5,000'
ASDA				
LDA	6,570'	5,224'	7,261'	4,824'

Construction Phase Notes

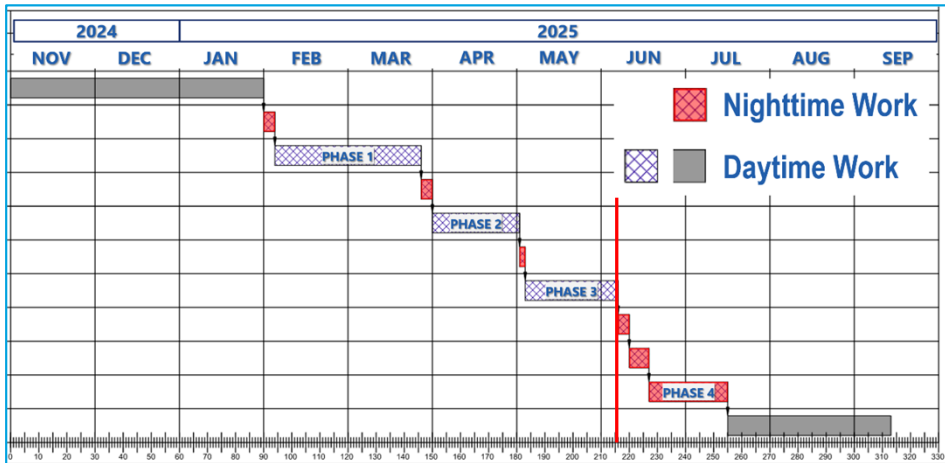
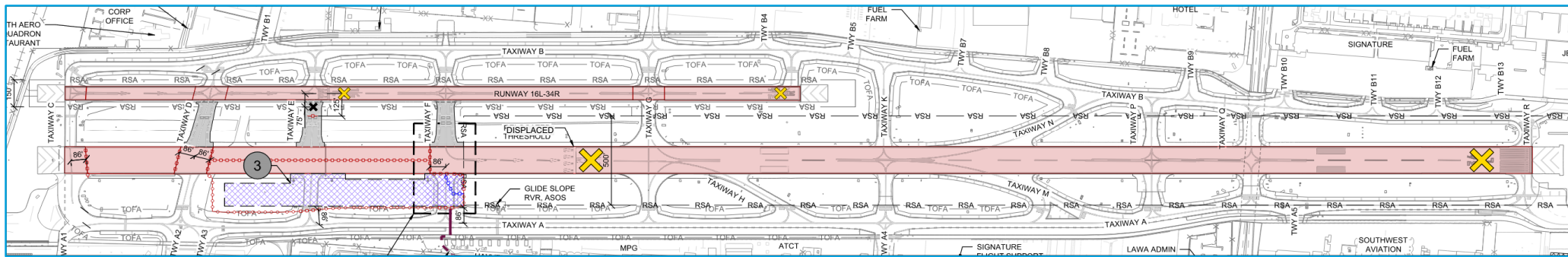
Construction

1. Work Hours: Daytime, Minimum 10-hr shifts.
2. Work Days: Monday thru Saturday.
3. Duration: 33 Calendar Days

Airfield Operations

1. Runway 16R-34L – Threshold Displaced, Partially Closed
 - a. 16R ILS Not Available
 - b. 16R PAPI Not Available, Temporary PLASI Available
 - c. RWY 34L Visual Departure Only

Phase 3B – Runway 16R Threshold Restoration 4 Calendar Nights, June 22 to June 26



Construction Phase Notes

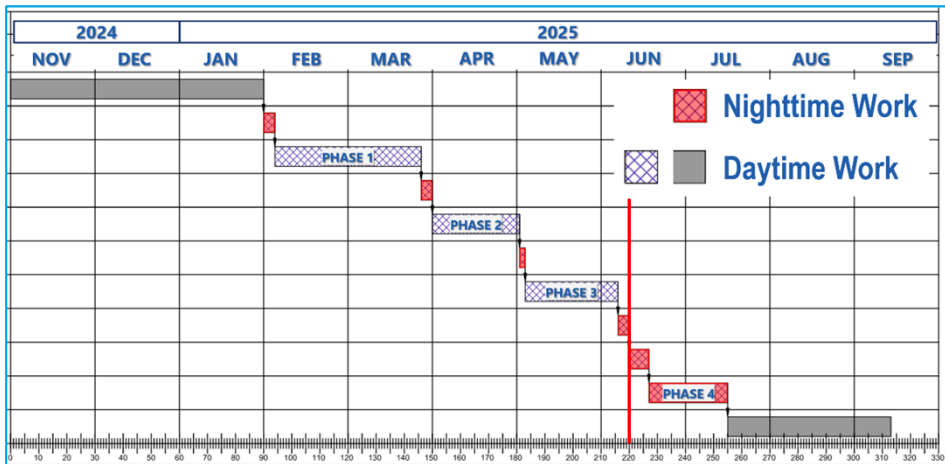
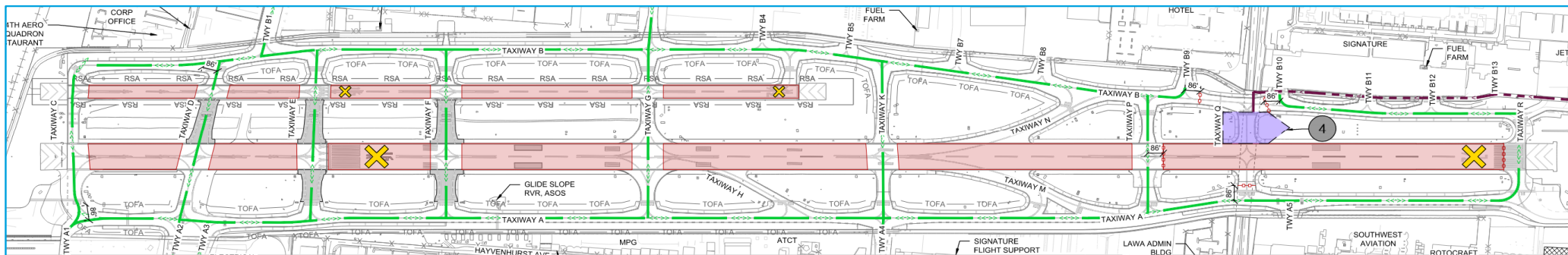
Construction

1. Work Hours: Nighttime 2230 to 0600
2. Work Days: Sunday to Thursday
3. Duration: 4 consecutive calendar nights
4. Other Criteria:
 - a. Runway 16R-34L shall reopen by 0600 at the end of each of the first three nights
 - b. Runway 16R threshold restoration shall take effect over the final night during the allocated duration

Airfield Operations

1. Runway 16L-34R and 16R-34L – Closed
2. Various Taxiways on north end – Closed

Phase 4A – Phase 4 Pre-Work – Taxiway Q (east) Investigation 7 Calendar Nights, June 26 to July 3



Construction Phase Notes

Construction

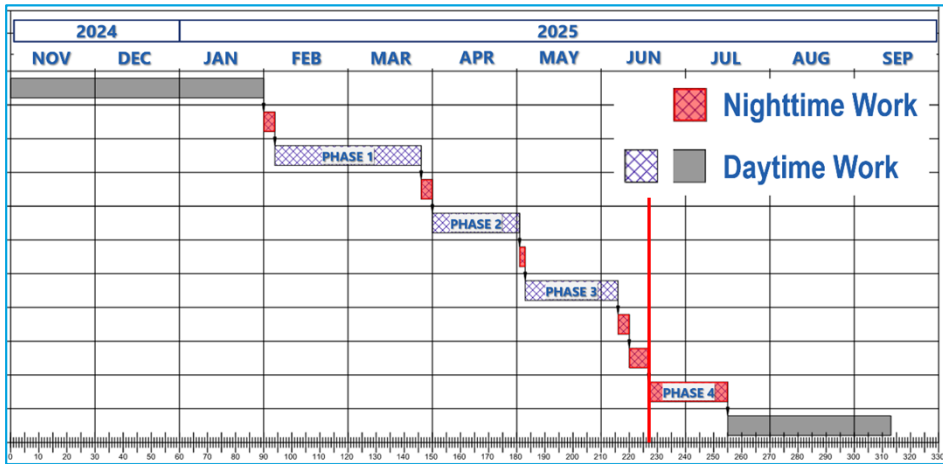
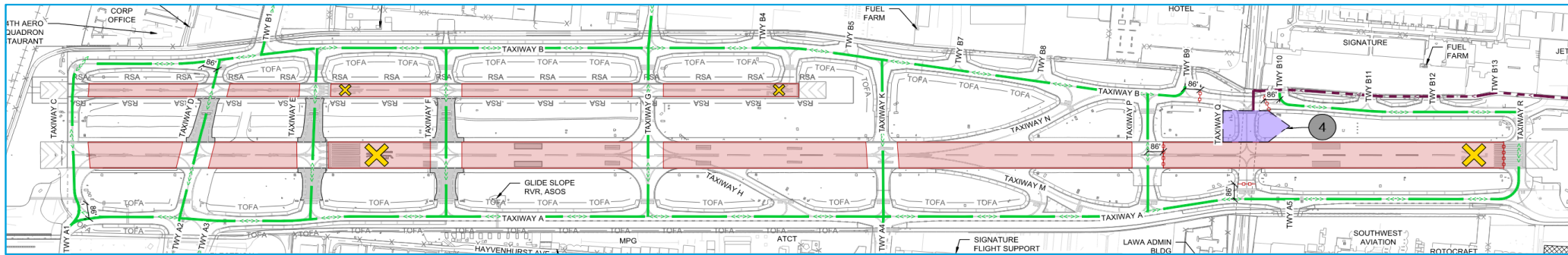
1. Work Hours: Nighttime 2230 to 0600
2. Work Days: Sunday to Sunday
3. Duration: 7 calendar nights
4. Other Criteria:
 - a. Runway 16R-34L shall reopen by 0600 at the end of each night

Airfield Operations

1. Runway 16L-34R and 16R-34L – Closed
2. Various Taxiways on south end – Closed

Phase 4 (night configuration) – Taxiway Q (east) Reconstruction

28 Calendar Nights, July 3 to July 31



Construction Phase Notes

Construction

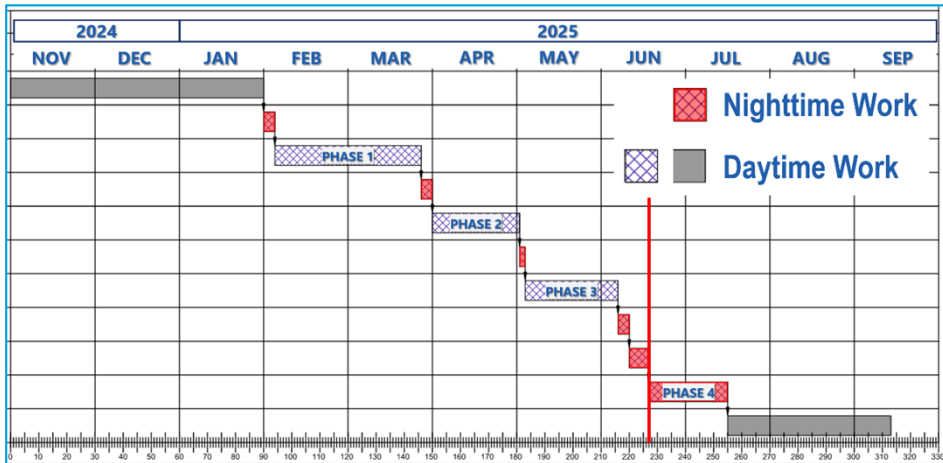
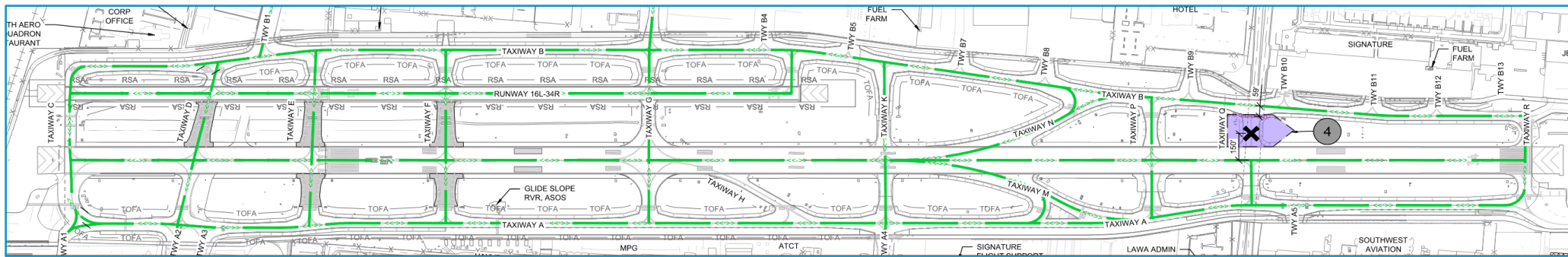
1. Work Hours: Nighttime, 2230 to 0600
2. Work Days: Sunday to Friday
3. Duration: 28 calendar nights
4. Other Criteria:
 - a. Runway 16R-34L shall reopen by 0600 at the end of each night

Airfield Operations

1. Runway 16L-34R and 16R-34L – Closed
2. Taxiway Q (east) – Closed
3. Taxiway B between B9 and B10 – Closed

Phase 4 (day configuration) – Taxiway Q (east) Reconstruction

28 Calendar Nights, July 3 to July 31



Construction Phase Notes

- Construction**
1. Work Hours: Nighttime, 2230 to 0600
 2. Work Days: Sunday to Sunday
 3. Duration: 28 calendar nights
 4. Other Criteria:
 - a. Runway 16R-34L shall reopen by 0600 at the end of each night

- Airfield Operations**
1. Taxiway Q (east) – Closed